



Village of Sherman

401 St. Johns Drive • Sherman, IL 62684
496-2621

Sherman Police Department

Emergency: 911 • Non-Emergency: 496-3256
Sangamon County Dispatch: 753-6666

Sherman Fire Protection District

Emergency: 911 • Non-emergency: 496-2213
Sangamon County Dispatch: 753-6666

YOUR ELECTED OFFICIALS

Trevor J. Clatfelter

Village President
496-2621 • (cell) 691-7737
tclatfelter@shermanil.org

Brian Long, Trustee
496-3228 • blong@shermanil.org

Jeff Mitchell, Trustee
496-2526 • jmitchell@shermanil.org

Kevin Schultz, Trustee
496-2006 • kschultz@shermanil.org

Krista Sherrock, Trustee
496-2654 • ksherrock@shermanil.org

Jay Timm, Trustee
496-3303 • jtimm@shermanil.org

Nancy Zibutis, Trustee
496-2459 • nzibutis@shermanil.org

Karen Franklin, Clerk
496-2634 • kfranklin@shermanil.org

COUNTY MARKET COMING TO SHERMAN! GROCER WILL BRING 50 – 100 PERMANENT JOBS AND TAX REVENUE



Mayor Trevor Clatfelter declares the new Village Center Road intersection officially open on October 29. Those attending the ribbon-cutting included (left to right) Todd Smith, Sangamon County Board (Dist.2); Senator Larry Bomke; Mayor Clatfelter; Larry and Julie Quinn, Prairieland Development.

It's been the number one ranked item on citizen wish lists for years and now it's a reality.

County Market will join Walgreen's in the new Route 66 Crossing, creating an anchor that will not only serve residents but also pull in visitors and draw additional new business to the intersection.

"This is a tremendous addition to Sherman and the culmination of more than a year of negotiations," said Sherman mayor Trevor Clatfelter. "We had a great team that knew our new intersection was a critical first step and worked hard to get federal stimulus money and state grants to help fund it. Now that those 35 acres are unlocked, it's likely we won't recognize this corner a year from now."

County Market is investing nearly \$5 million in the new store, which will have a minimum of 25,000 square feet and a stucco, stone and brick façade. It will be a full service store with meat and produce departments and a deli. The grocer predicts gross sales of \$22 – 24 million over the first three years, generating significant sales tax revenue for Sherman.

"We renegotiated the contract the previous administration set up because it gave 50 percent of the sales tax revenue generated back to the developer," said Clatfelter. "Now Sherman will get 75 percent of sales tax revenue generated until 2016. After that, we'll get 100%."

Continued on p. 3

Architect's rendering of the new County Market grocery store. Evan Lloyd Associates, Inc.





★ FROM THE MAYOR ★

SPENDING STIMULUS FUNDS THE RIGHT WAY

Whatever you think of the American Recovery and Reinvestment Act, the federal stimulus funds for Sherman literally paved the way for the new Walgreens and County

Market going up in the Route 66 Crossing development.

We deserve a beautiful main thoroughfare in Sherman. The Village Board and I were gratified to recently pass a Village ordinance that prohibits all future aerial power lines effective immediately. Developers will be required to seek a variance and the Board will decide whether to grant it. The ordinance does not impact existing aerial lines, but there are plans to bury as many of those as possible.

CONGRATS, SARAH PHALEN!

Congratulations to Sherman native Sarah Phalen, who was just named President and CEO of Illinois National Bank (INB). Watch for a profile of Sarah in the next newsletter.

WANTED TO SHARE...

You are never so grateful to live in such a wonderful, safe, friendly small town as when you bring a child home to live here, too. My wife and I welcomed James Harrison Clatfelter, our first child, on December 8, ironically, the Feast of the Immaculate Conception. He was born at 3:12 p.m., weighed 7 lbs., 14 ½ oz, and was 21 ½ inches long, which puts him at the 96% percentile in height. He's healthy and mom is doing well, too. We look forward to joining the rest of Sherman's families at the parks, at school events, on the soccer and baseball fields, and more during the coming years.

Best wishes to you and your families in the new year.



Sincerely,

Trevor J. Clatfelter
Mayor



Rich Niemann, Jr., President/CEO of Niemann Foods, the parent company of County Market, was on hand to help announce Sherman's new grocery store. Behind Niemann are Senator Larry Bomke (left) and Representative Rich Brauer.

The \$280,212 in stimulus funds paid for approximately 40 percent of the cost of the new Village Center Rd/Business 55 intersection and, as a result, up to 135 new jobs between the County Market and Walgreens stores will put our people to work in 2011. Some of the part-time jobs will likely go to our teenagers, giving more of them a chance to earn money close to home.

That's exactly the purpose for which the stimulus funds were intended. Stimulate economic development, create jobs and build sales tax revenue for local communities. We're grateful for the funding and proud of what we've been able to accomplish with it.

BEAUTIFICATION STILL A PRIORITY

If you're going to build something, do it right. We are fortunate to have two new retailers who agree. Both Walgreens and County Market will build aesthetically pleasing structures with facades that fit what we had in mind when we made beautifying the Village a priority.



The power lines at Andrew Road and Business 55 will soon be buried underground.

We'll do our part, too. We were able to come to an agreement with Ameren and the developer to take down the power lines and poles that obstruct the view at Route 66 Crossing and bury them underground.



Mayor Clatfelter and Prairieland Development CEO Larry Quinn cut the ribbon on the new Route 66 intersection, along with Senator Larry Bomke, Jay Timm, Sherman trustee, and Roger Driskel, IDOT.

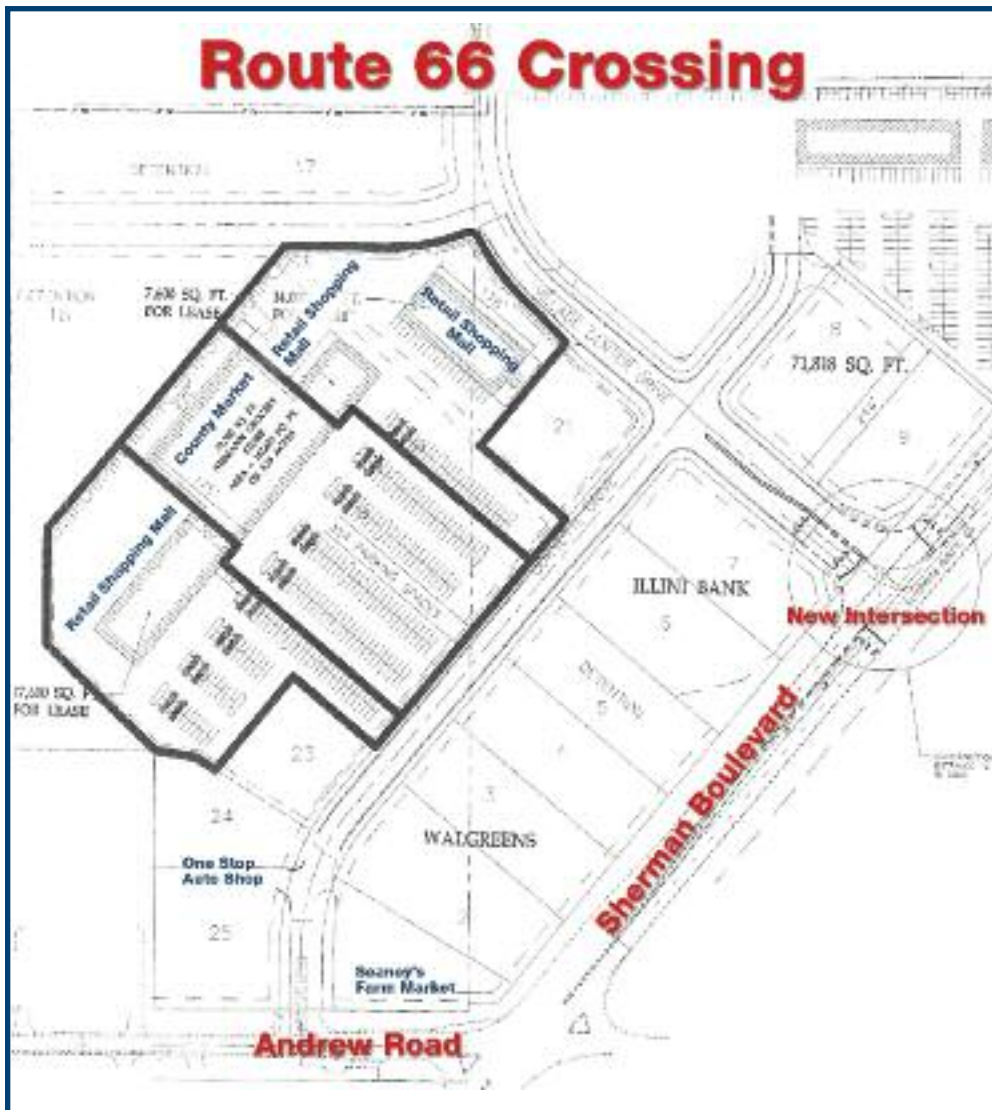
Clatfelter said, even with Walgreens and County Market moving in, there is still a lot of room for growth in the 35-acre development. In fact, strip malls will be built attached to the new County Market, providing 17,600 square feet of space on one side and 8,000 square feet on the other side. Two additional buildings will be erected adjacent to the grocer. All the space will be marketed to new business.

“The increased shopping for area residents and the jobs that will be created are the best parts of all of this,” said Clatfelter. “County Market will hire 50-100 people, Walgreens is hiring 30-35. That doesn’t count jobs created by the construction of the buildings, jobs that will pay prevailing wage. The retailers have also pledged to buy building materials locally, when possible.”

Clatfelter said economic development remains the top priority of Sherman’s comprehensive plan. He plans to continue to aggressively market the Village, using incentives such as the TIF funds used to seal the deals with County Market and Walgreens.

“TIF funds alone won’t bring commitments from major retailers if they aren’t convinced Sherman is a good place to do business,” said Clatfelter. “We also have the car counts on Business 55, citizens committed to patronizing local business, and a Village administration seeking planned growth consistent with a comprehensive plan.

“I’m just so glad for our residents. They have wanted a full service grocery store here for so long. It’s the type of business that helps define a great hometown.”



How would YOU spend TIF Funds?

Starting a business in Sherman? Planning a façade or other upgrade to your current business? Have an idea for beautifying Sherman and attracting business? Let us know!

info@shermanil.org

GRINDER PUMP REPAIRS

Residents of Birch Lakes who utilize grinder pumps: If a problem occurs with your pump, contact Sean Newton, Public Works Director, for assistance at 496-2483 (office) or 306-5739 (cell).

Village Beautification

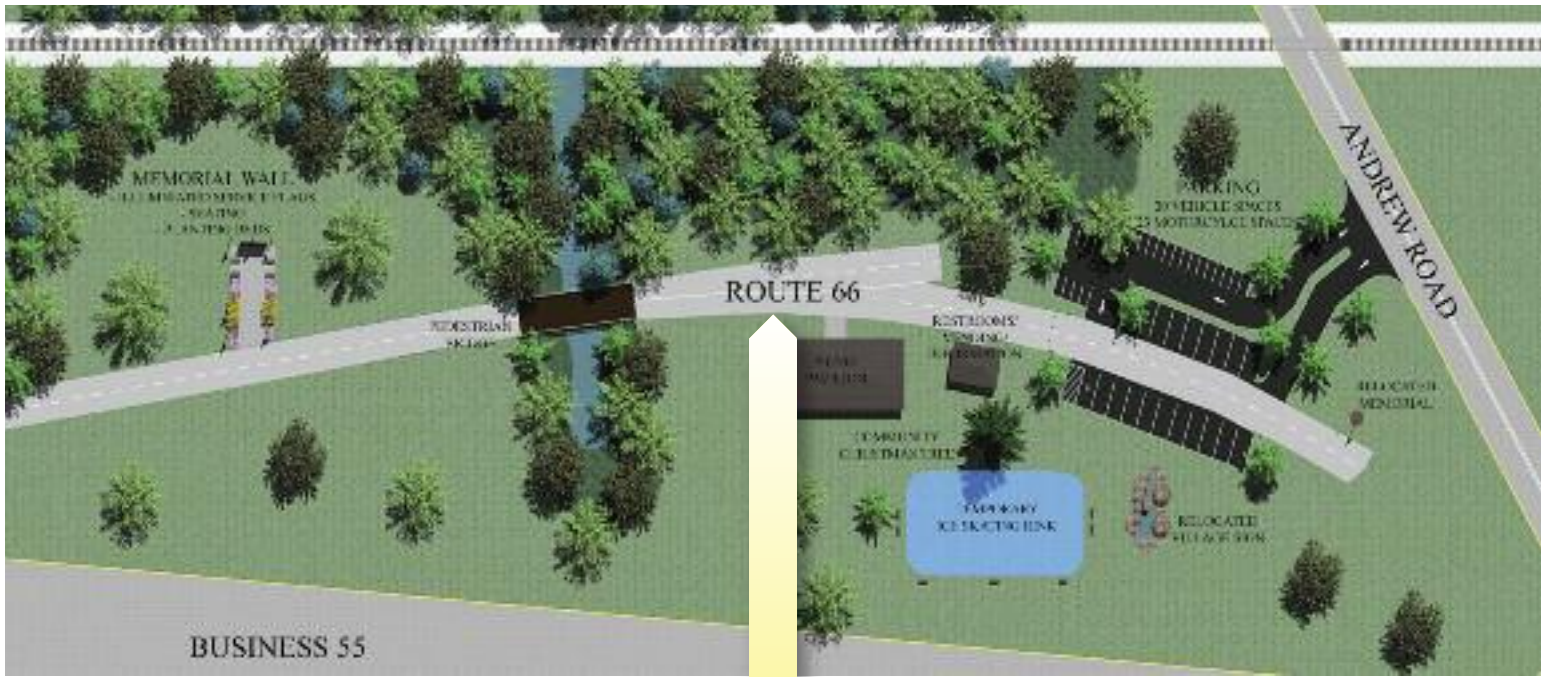
Watch our progress!

ROUTE 66 PARK PLANS TAKING SHAPE

**ROUTE 66/
VETERAN'S MEMORIAL
PARK
SHERMAN, ILLINOIS**

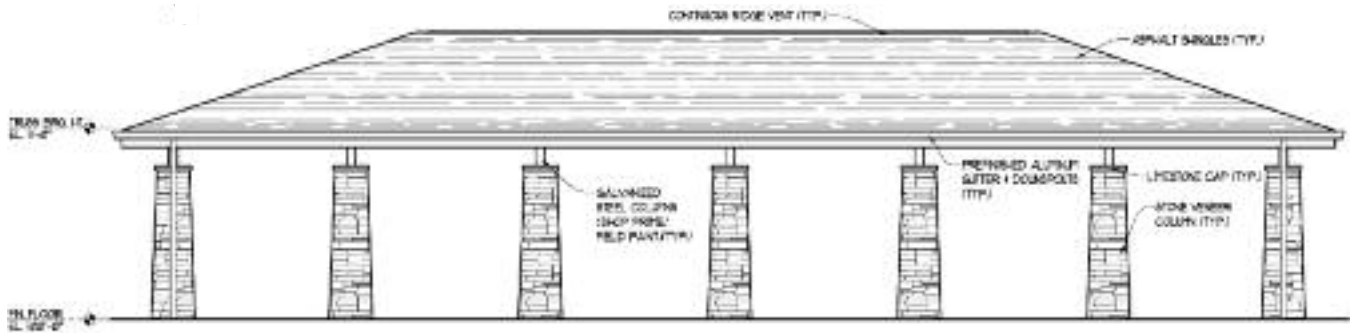


Plans for the Route 66/Veterans Memorial park on Sherman Boulevard include a pavilion, restrooms, and, possibly, space for an outdoor ice rink.

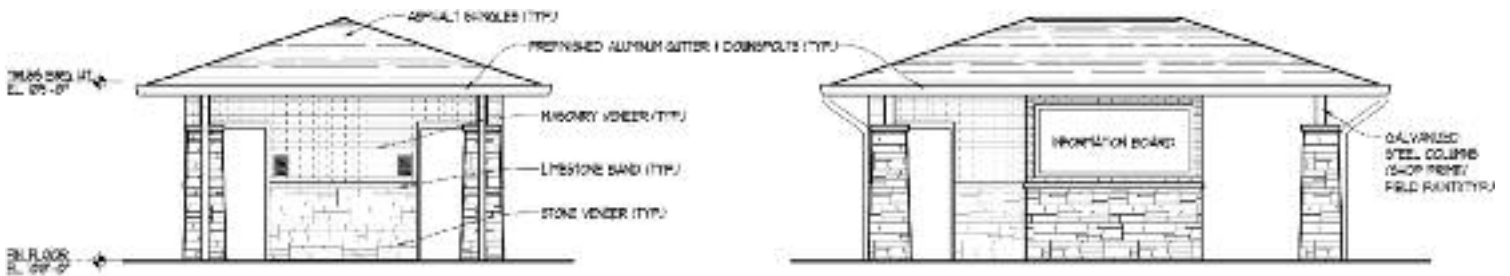


A large piece of the road through the park is a preserved section of the original Route 66 pavement. This unique feature in Sherman's newest park is expected to draw Route 66 enthusiasts to the area, helping area business and Village tax revenues

PICNIC PAVILION AND RESTROOMS DESIGNED FOR RESIDENTS AND TOURISTS



Pavilion



Public Restrooms

The plans for revitalization of the Route 66/Veterans Memorial Park at the corner of Andrew Road and Business 55 continue to progress.

A new pavilion is now planned for the park area across from Seaney’s Farm Market and Family Video. The pavilion will house picnic tables and be equipped with electrical outlets, providing residents with another option for family and group get-togethers and, hopefully, an attraction for tourists.

“This plan takes an empty, odd-shaped piece of land and turns it into a family-friendly green space for our community to use,” said Trevor Clatfelter, mayor. “It will also be a beautiful and fitting location for our Veterans Memorial, should funds for that project become available.”

The Veterans Memorial will be reached by crossing a pedestrian bridge that will span a landscaped retention pond. There will be benches, flowerbeds, and illuminated service flags to create a peaceful oasis. A new, paved parking lot for 20

vehicles will also have space for motorcycles. Clatfelter said the Village is hoping tourists coming through during the summer will stop to rest and take advantage of the local restaurants and shops.

The pavilion structure will feature the same type of stone that will be used in the construction of a future new Village Hall, contributing to the Village’s commitment to a comprehensive development plan and aesthetically pleasing buildings and structures, particularly along Sherman Boulevard.

“Right now, space is set aside for a temporary ice rink,” said Clatfelter. “We may decide to place it at another location, but giving residents another recreational option in the winter is the goal.”

The plans will be funded through grants the Village is working to secure. Work is expected to get underway this spring or summer and will be completed in phases.

NEW MUNICIPAL BUILDING ON VILLAGE MASTER PLAN

EXPANSION WILL FIX SEVERE SPACE PROBLEM ADD RECREATIONAL SPACE

The location is a 10-acre plot of land facing Sherman Boulevard along Old Tipton School Road, way too much space for just a Municipal Building, even one that would greatly expand the current facility.

So, instead of wasting the space, the Village asked architects to come up with a site plan that would not only meet Village operational needs for at least the next 25 years, but also provide residents with some of the recreational facilities they've been requesting for years.

"As with all grand plans, the scope will depend upon the available funding and we might have to do this in phases," said Trevor Clatfelter, mayor. "We will build as much as we can afford. However, it's important to think ahead so the appropriate infrastructure can be developed appropriately from the outset."

The plans envision a comprehensive recreational space, with covered shelters for picnics, an amphitheater, a dog park, playgrounds, and a mile-long paved walkway. There is land set aside for a pool and pool house but Clatfelter said that type of project would have to be a private undertaking or possibly a public-private partnership.

"The Village is not in a position to build a community pool but we have hopes that a private enterprise will be interested," said Clatfelter. "We know a pool is important to our families because they have said so, over and over, in our resident surveys."

The first priority, however, will be the new Municipal Building, and creating a separate space for the public works department. Clatfelter said they are looking at land underneath the water tower at the corner of Andrew and Old Tipton roads as a possibility. There is room for the snow plows and other public works vehicles and possibly even room for residents to drop tree limbs and plant debris, a space the Village would take care to hide from the road.

"There are so many things wrong with the current facility, we've been advised that fixing it would cost far more than replacing it and it would still be inadequate for our needs," said Clatfelter. "We have an opportunity right now to give residents a municipal building they deserve, one that will improve services, be more accessible, and, ultimately, save them money."

The new Municipal Building would also house a community center, open to the public. Groups such as the sports boosters, senior citizens' groups, Cub Scouts, and various homeowners associations would be able to reserve the space for their meetings.

The new facility and recreational space would be funded through a combination of TIF funds, state grants, and the sale of the current building.



PLANNING FOR THE FUTURE

All plans for a new Municipal Center and surrounding recreational space are **ONLY** plans until funding becomes available. Forward-thinking communities plan ahead. As the town grows and new business contributes to the tax base, Sherman will be able to expand services and we will be ready.





Architects' rendering of the new Municipal Building and recreational site plan. Evan Lloyd Associates, Inc.
 All plans for a new Municipal Center and surrounding recreational space are *ONLY* plans until funding becomes available. Forward-thinking communities plan ahead.
 As the town grows and new business contributes to the tax base, Sherman will be able to expand services and we will be read

SHERMAN TO WILLIAMSVILLE BIKE TRAIL PROJECT CLOSER TO REALITY

The recreational bike trail connecting Sherman and Williamsville is a giant step closer to reality.

IDOT just announced its federal transportation enhancement grants and the two communities were awarded \$269,000 to begin engineering work for the project. The trail, which will run parallel to I-55 on the Ameren/ Cilco right of way, will cost a minimum of \$1.2 million. The funding comes from a pool of money set aside to improve transportation safety and the

quality of life in Illinois by promoting alternative transportation, including bike trails.

“To give you some perspective on how fortunate we were, IDOT received more than 391 applications requesting just under \$370 million in funding and only \$90 million was awarded to a much shorter list of projects,” said Trevor Clatfelter, mayor. We are grateful for the initial funding and, along with Williamsville, will continue to pursue the remainder of the money from a variety of sources.”

SHERMAN SPORTS THERAPIST MARKS DECADES OF HEALING

JIM BYRON ASSISTED THOUSANDS OF ATHLETES IN HIS CAREER



Jim and Illa Byron

When the Williamsville Bullets made their run to the playoff quarterfinals this season, a familiar face was with them on the sidelines. Jim Byron mostly supplies encouraging words to the players these days, but for more than 25 years, the Sherman resident served as the team's unofficial sports therapist.

"At the games and practices, I helped the players recovering from injuries but also the ones with cramps or muscle spasms," said Byron, who, at age 79, still has forearms and hands that are strong and muscular. "I can follow a muscle spasm like a road map."

Thousands of high school and college athletes over the years can attest to that. Byron ran The Sports Therapy Center out of a small building off Andrew Road beginning in 1987. Before that, he ran the business out of his home. He focused on healing massage, whether the injury was a neck, a back, a knee, or an elbow. Athletes from dozens of high schools as far as 75 miles away came. He charged \$10 for students. Some could pay, some couldn't. Byron treated them all the same.

And when it came to his beloved Williamsville Bullets football team, he was always there, never as a paid trainer but as a volunteer, massaging sore limbs and wiping down overheated faces with an iced towel.

If the players have to bend down so Byron can reach them, they don't mind. And he doesn't mind, either. Spina bifida, which severely stunted his growth and required more than 25 surgeries, is barely an inconvenience at this point. He credits his faith, his family, and the love he feels from the people he works with.

"I am the one who is blessed," said Byron. "I tried to help heal the boys but also to inspire them and lift their hearts. I thank God for the opportunity."

The fact that most of his clients over the years were athletes was no coincidence. Byron started his career at Wheaton College in 1958 after following his brother to college from their childhood home in Pittsburgh. The brother was there on a football scholarship and Byron applied for the job of equipment manager. The Wheaton coach was a little skeptical but gave him a chance. Byron worked hard to prove himself, even building his strength by walking on his hands across the gymnasium floor when no one was around.

"One day the coach asked me if I'd massage the knee repair of one of the players," said Byron. "I worked with him and he ended up coming back to play."

The coach was sold and Byron employed his healing touch with the team for the next six years. Along the way, Byron met a young woman at a missionary meeting named Illa (pronounced Eye'-la). "I asked her if she'd like to go out for a milkshake and she said yes," said Byron, still marveling after more than four decades of marriage.



Byron works over an injured football player early in his career.

The newlyweds came south and Byron spent 10 years working with Springfield High School before opening his business in Sherman and, shortly thereafter, meeting former Williamsville football coach Paul Jenkins.

“He was old school, really tough, and said he would try me out working with three young people who were hurt,” said Byron. “He wanted them back on the field. I gave the massage and God did the healing.”

Byron’s been a Bullets fixture ever since, volunteering under Coach Aaron Kunz after Coach Jenkins retired. The massages officially stopped in 2005, after the State of Illinois required Byron to be licensed. He’s still on the sidelines, but now he offers moral support to the players, passing out kind words and hugs when needed.

He’s also writing a book about his life and will document the tough years when classmates would mock him, doctors predicted an early death, and he wondered if he’d ever find anyone to love him. He’ll also share stories of the successes, of his family (children Bob and Mary and their families), and a spirituality that he claims has ably guided him.

“It’s important that you feel energized by your love of what you do,” said Byron. “I’ve been very fortunate.”

JIM BYRON SCHOLARSHIP ESTABLISHED

Committee seeks funds to honor beloved massage therapist

Williamsville high school administrators have already been notified that the first annual \$1,000 Jim Byron Scholarship award will go to a senior graduating this spring.

A group led by Sherman resident Bill Hahn has raised \$7,000 so far among fans and friends of Byron to establish the scholarship. The goal is to raise at least \$20,000 to fund the award in perpetuity.

Hahn is the father of four Williamsville High School athletes – Julie, Bret, Karen and Marsha – all of whom used Byron’s services at some time. Hahn said he is honored to lead this effort.

Jim is a very caring person, never worries about himself,” said Hahn. “He has done so much for this community over the years.”

Not surprisingly, the criteria for the scholarship reflect what Hahn said are characteristics of Byron himself. Besides a minimum 2.5 GPA and financial need, the successful candidate “must demonstrate integrity, honesty and humility, and have contributed to the community in some way”. Students planning to attend a community college, four-year college, or vocational/technical school are eligible.

The Sangamon County Community Foundation will administer the scholarship fund. Applications for this first award are available through the WHS guidance office and are due March 1.

Anyone who wishes to contribute to the scholarship endowment should contact Bill Hahn at bms@springnet1.com



The Williamsville football team honored Byron’s many years of service in 2008.



Sherman’s Keith Williams, #55, tackles an opponent during the 2010 playoffs.

LOCAL ROAD OVERLAYS SAVING LOCAL AUTO SHOCKS

LIST OF POTHOLES BEING PARED ONE STREET AT A TIME

Even in a bad economy, it makes sense to place a priority on your infrastructure. That's what the Village of Sherman is doing, chipping away at the long list of road repairs needed in local neighborhoods.

"We have to prioritize projects because of budgets, but we'll try to get to you," said Trevor Clatfelter, mayor. "We're making good progress."

Recently, streets on St. John's, Cabin Smoke, and in the Crowne Pointe subdivision were completed. When weather permits, residents can expect to see the Public Works department or contractual employees in action action this winter and spring."



A crew works on a road patch in Crowne Pointe.



Watch for more information soon on the Village's new website! Coming January 2011, the website will provide news features and useful information for residents as well as promote our community to new businesses.

CONGRATULATIONS TO OUR BOYS OF FALL!

We couldn't be prouder of the football Bullets, who reached the 2A quarterfinals this year. Congratulations on an outstanding season and a great run in the playoffs. *You make our community exceedingly proud.*



Sherman's Jared Buscher, #44, and teammate Brock Kamreth tackles a Maroa-Forsyth running back during the Bullets' quarterfinal loss on November 13.



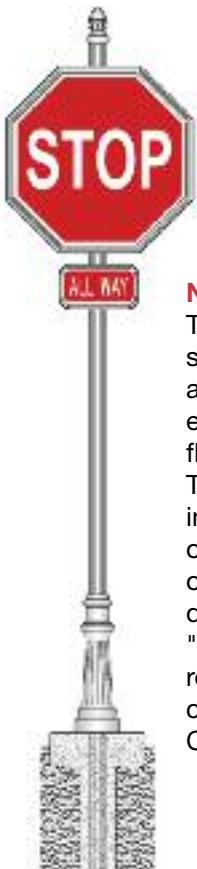
On behalf of the Village, Mayor Trevor Clatfelter welcomed Bishop Thomas John Paprocki of the Springfield Catholic Diocese to Sherman on November 6, at a men's breakfast of the local Knights of Columbus. From left: Fr. Mark Schulte; Monsignor Carl Kemme of St. John Vianney Parish; Most Reverend Thomas John Paprocki; Mayor Clatfelter; and Grand Knight Tony Schmillen, Sherman Knights of Columbus.



NEW VILLAGE ENTRANCE MARKERS PLANNED

The Village administration is seeking grant funding to build brand new stone entrance markers, welcoming visitors to Sherman. The large arches would be placed on the northern and southern borders of Sherman Boulevard. The smaller stone pillars would mark secondary entrances. The current "Welcome to Sherman" signs would be moved to other parts of the Village. The project would support the rest of the ongoing efforts to create a beautiful Sherman Boulevard and further establish the Village as the gateway to the Lincoln sites.

On one side, the arch will read: "Village of Sherman".
On the other side: "Welcome to Sherman"



NEW STOP SIGNS

The new stop signs planned for the streets in the Route 66 Crossing will be a step above your average stop sign. The enhanced design is intended to match the fluted light poles on Sherman Boulevard. The new signs represent one more step in the efforts to beautify the Village. All of these special touches add to the allure of Sherman and help us attract business development. There are also plans to "cut" crosswalks in the streets and replace with brick pavers, much like you can see in Chicago or on Springfield's Capitol Avenue Revitalization project.



EXTENDING OUR STREETSCAPING

The Village is seeking grant funding to continue the lighting streetscape along Sherman Boulevard. Plans call for installing up to 22 more boulevard lights, extending the lighting from the northern to the southern end of the portion of the road lying within Sherman's boundaries. Currently, 11 lights, which feature fluted poles and resemble historic gaslights, line the median.

ILLINI BANK DONATES CURRENT BUILDING TO VILLAGE POLICE

NEW BANK BUILDING TO RISE IN ROUTE 66 CROSSING DEVELOPMENT

Turns out, it won't take much to transform one of the most secure buildings in Sherman into an even more secure police station.

The reinforced vault is already there to serve as the new evidence locker. Remove the teller counters, put a few walls up, and voila...the new home of the Sherman Police Department. Access to Andrew Road is out the front door and the Village's main thoroughfare is seconds away.

"This is a tremendous development for our police department and we are grateful to one of our leading businesses for its generosity," said Clatfelter. "It will alleviate the numerous problems our police officers have had to live with for years in the current municipal building."

The police department is severely cramped in the current space. There is no holding area, no interview room and no storage. Officers share offices with each other and with stacks of videotapes and equipment.

There is also no basement, which caused safety issues in May 2008 when the Mayor, police chief, and emergency management personnel had to monitor the tornados from the main floor. Emergency Management will share the new building and tornado sirens will now be triggered from the safety of the basement.



"Illini Bank has been part of the community for over 30 years and is always looking for ways to give back to the community," said Greg Birky, Illini Bank President. "The opportunity to donate our current building to the village is another way to continue giving back."



Community Center Entrance

NEW ILLINI BANK BUILDING WILL INCLUDE COMMUNITY CENTER

In another generous move, Illini Bank announced that plans for its new bank building also call for constructing a detached building adjacent to the new bank that will house a small community center.

The center will provide a space for community groups who can reserve it for meetings or events.

"This is the type of forward thinking typical of a business that values its customers and the community in which it does business," said Trevor Clatfelter, mayor.

Illini Bank Entrance



SHERMAN NATIVE NEW ILLINI BANK BRANCH MANAGER

MATT SEMAN RELISHES OPPORTUNITY TO SERVE HOMETOWN

Many Sherman residents may remember him as the quarterback and kicker for the Williamsville Bullets, a talented athlete from the Class of 1989 who went on to play the same positions for Western Illinois University.

A whole new generation will know him as Matt Seman, Branch Manager of Illini Bank, and that suits Seman just fine. The Sherman native took the helm at the Sherman branch last fall and is eager to get involved.

“We have a great staff and every one lives in Sherman or the Cantrall area,” said Seman. “I think it’s important for residents to know that the people providing services every day and making loan decisions are local. They know and love this community and have a stake in helping it succeed.”

As branch manager, Seman is directly involved in commercial and residential lending. He said he has enjoyed getting reacquainted with people he remembers growing up, and introducing himself to the rest. He is excited about the growth that has taken place in Sherman since he left for WIU in 1989 and looks forward to supporting new business and new homeowners.

In his new position, Seman will draw upon a 12-year career in finance. After earning a degree in construction management with a minor in business, Seman became a financial planner, managing investments for clients around the country. Based in Dallas, his business portfolio thrived but his travel schedule was grueling. Five years ago, he returned to central Illinois, and last fall, left financial planning for traditional banking with



Matt and Shelly Seman with Paige, 7, and Jake, 5.

the position at Illini Bank. He was on hand to help break ground on Illini Bank’s new building on December 20.

“A Sherman Boulevard location will give us better visibility,” said Seman. “We should be ready to move in next fall.”

In the meantime, Sherman residents can expect to see this former football star coaching his son in JFL, attending his daughter’s school events, and otherwise, enjoying his hometown. As far as this Sherman native is concerned, he’s home to stay.

FROM YOUR **POLICE DEPARTMENT**



NEW TOOLS WILL HELP POLICE WORK

That big, black SUV you see on the roads these days is making it a whole lot easier to conduct a crime scene investigation in Sherman.

The Village used the proceeds from the sale of vehicles seized through drug and DUI convictions, some general revenue funds, and funds from the police vehicle fund to purchase the SUV. The car is now clearly identified and has plenty of room for the various investigation equipment needed.

“Before, the equipment would have to be stored in the police department building and hauled back out to the car every time it was needed,” said Trevor Clatfelter, mayor. The department has needed this set-up for a long time.”

In addition, the department was able to purchase new digital cameras for the police vehicles. The cameras are smaller and easier to store and provide higher quality photos.

POLICE CHIEF CERTIFIED BY STATE ASSOCIATION

ERIC SMITH AMONG SELECT FEW IN ILLINOIS TO MEET REQUIREMENTS

The Village of Sherman is proud to announce that Police Chief Eric C. Smith has been honored by the Illinois Association of Chiefs of Police (ILACP). Smith was designated a Certified Police Chief through the Association’s certification program. Illinois is the only state in the U.S. that currently offers a certification program based on an extensive, legally validated examination process.

To be eligible, officers must meet rigorous criteria for experience, including command and executive posts; education, professional membership, and community involvement. Candidates who demonstrate their mastery in these areas must then face a panel of their peers, which evaluates the candidate in the areas of leadership, management, public relations, verbal communication, and ethics.

Police Chief Eric C. Smith spent three days and nights on the roof of the Cancun Restaurant in Sherman in August to raise \$5,000 for Special Olympics, exceeding the goal. “Without the generous support of Cancun restaurant, the Crossing Mall, Carter Bros. Lumber, Noonan’s True Value Hardware, and local residents who donated, this wouldn’t have been possible,” said Smith. The annual Law Enforcement Torch Run is the largest fund-raising vehicle benefiting Special Olympics Illinois.

ONLY 10% OF SHERMAN SIGNS UP FOR EMERGENCY ALERTS

RESIDENTS ENCOURAGED TO REGISTER

It’s new and it’s free and it’s designed to save lives. So Village administrators are a little confused as to why so few residents have signed up for Nixle.



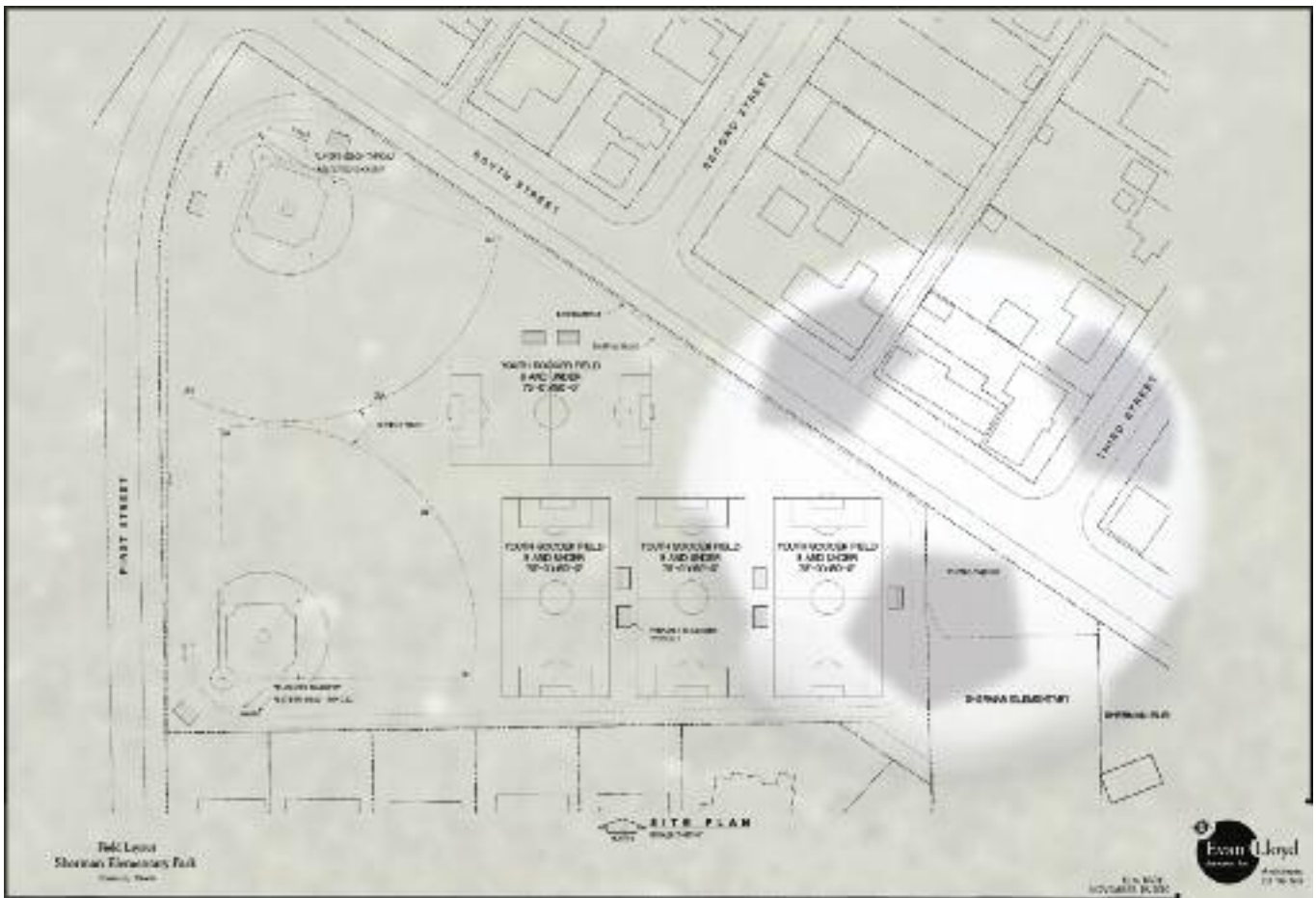
“Nixle is an electronic emergency alert system,” said Eric C. Smith, Sherman police chief.

“The service allows us to send telephone, text or email alerts to citizens in the event of an emergency.”

There is an icon on the Village’s website www.shermanil.org/nixle/Index.asp that residents can click on to read more about what’s available. For example, residents can indicate that they’d like to be notified in the event of severe weather threatening Sherman or even a certain area of Sherman.

Residents can also determine the priority level of the messages that reach them and can configure exactly how messages should reach them – text and email, text only, etc.





NEW BALL FIELDS, SOCCER FIELDS PLANNED NEXT TO SCHOOL

Five acres of land next to Sherman Elementary School is sitting in a TIF district and, with the permission of the school board, the Village intends to make the most of it. Plans call for spending TIF funds to turn the empty lot into up to four soccer fields and two baseball/softball diamonds for Sherman’s ball players, including the organized youth athletic teams.

“It’s pretty inexpensive work and it’s a shame to let it sit empty when our kids don’t have enough space now,” said Trevor Clatfelter, mayor. “We approached the Williamsville school board about putting the land to good use outside of school hours and they agreed. It’s a great partnership for the benefit of our kids.”

The new park, which should be ready for spring, will have portable equipment that the Village can move in the event the school needs to expand or, otherwise, take back the land. The new fields and diamonds will supplement the current facilities at Waldrop Park, which sometimes tend to flood.”

“We still want to build a new 40-acre park for everyone but until we can afford it, that plan is on hold,” said Clatfelter. “This is something we can do in the meantime. Besides providing a great facility for our own kids, these additional fields will bring in sports families from the opposing teams who will use our gas stations and restaurants while they’re here, helping our businesses and bringing in more tax revenue for the Village.”

SHERMAN RESIDENTS COME THROUGH ON CENSUS COUNT

Thank you to all Sherman residents for making sure they were counted in the latest census. We ended up with one of the highest participation rates in the state – 94%!

It’s critical that Sherman be counted. We are reimbursed for our portion of the state’s income tax and motor fuel tax every year on a per capita basis. That means \$260,000 – 300,000+ annually will be coming our way to support our Village’s operations.

Congratulations, Sherman!





Village of Sherman • 401 St. John's Dr • Sherman, IL 62684

PRSRT STD
U.S. Postage
Paid
Sherman, IL
Permit No. 2

Postal Patron
Sherman, IL 62684

Sherman News



ZINN
CONSTRUCTION, LLC
496-3112

Old Hickory
at THE RAIL

NEW HOME CONSTRUCTION & CUSTOM DESIGN

- Competitive Pricing
- Superior Quality
- Current homes priced \$169,900 to \$379,900

NOW OFFERING:

- Condominium Duplexes at The Rail Golf Course
 - Lots starting at \$49,900
 - Finished Units starting at \$230,000

www.zinnconstruction.com
Phil Zinn at 217-415-1807



*Best Wishes for a Happy
and Prosperous New Year
To All Sherman Residents*

**Mayor Trevor Clatfelter
and the Sherman Village Board**

LET US KNOW

This is YOUR Village. Help us make it the best it can be. If you see a streetlight out or a pothole opens up, drop us an email. And let us know how we're doing.

www.shermanil.org • info@shermanil.org